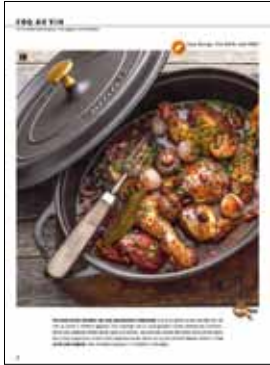


Weinempfehlungen Herbstmagazin



ROT
Beaujolais
Pinot Noir



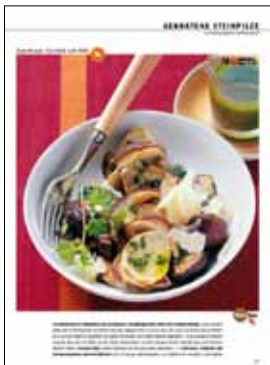
WEISS
Grüner Veltliner
Grauburgunder
Chardonnay



ROT / WEISS
Syrah
Chardonnay



ROT
Sangiovese
Spätburgunder
Zweigelt



ROT / WEISS
Barbaresco
Grauburgunder



ROT
Grenache



WEISS
Silvaner



WEISS
Sauvignon Blanc



WEISS
Riesling



WEISS
Auxerrois
Grauburgunder



WEISS
Auxerrois
Grauburgunder



BRANDY
aus Jerez

Kontakt
Dorit Schmitt
CHATEAU et CHOCOLAT

